



Government of Nepal
Ministry of Energy, Water Resource and Irrigation
Department of Hydrology and Meteorology
Climate Division
 Babarmahal, Kathmandu

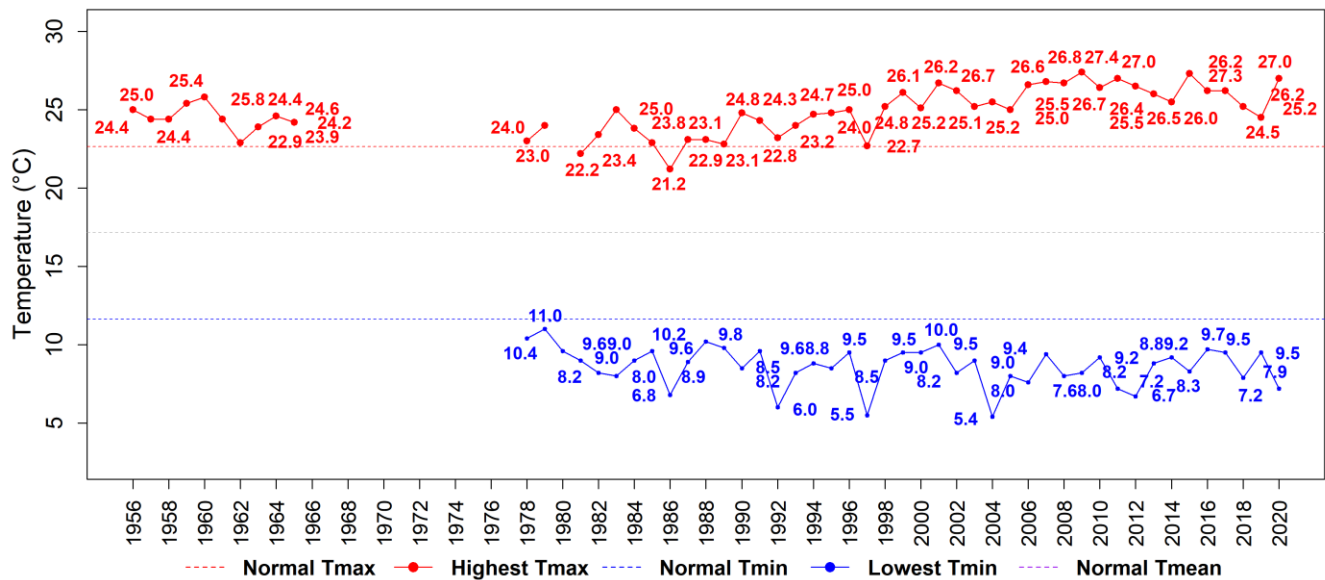
Extreme Temperature in October

October is a month of post monsoon (October-November) season. In this report, daily extreme temperature information of major 20 stations shown in map 1 is presented. Among these stations, the highest daily extreme maximum temperature of 39.8°C was recorded at Dipayal, Doti on 17 October 2020, and the lowest daily extreme minimum temperature of -9.2°C was recorded at Jumla on 29 October 1975. Trend of daily extreme temperature and its significance are shown in Table 1, and ever recorded daily extreme temperature is shown in Table 2.

Extreme Temperature at Dadeldhura in October

Ever recorded highest daily maximum temperature: 37°C on 17 May 2010

Ever recorded lowest daily minimum temperature: -5°C on 25 January 2008



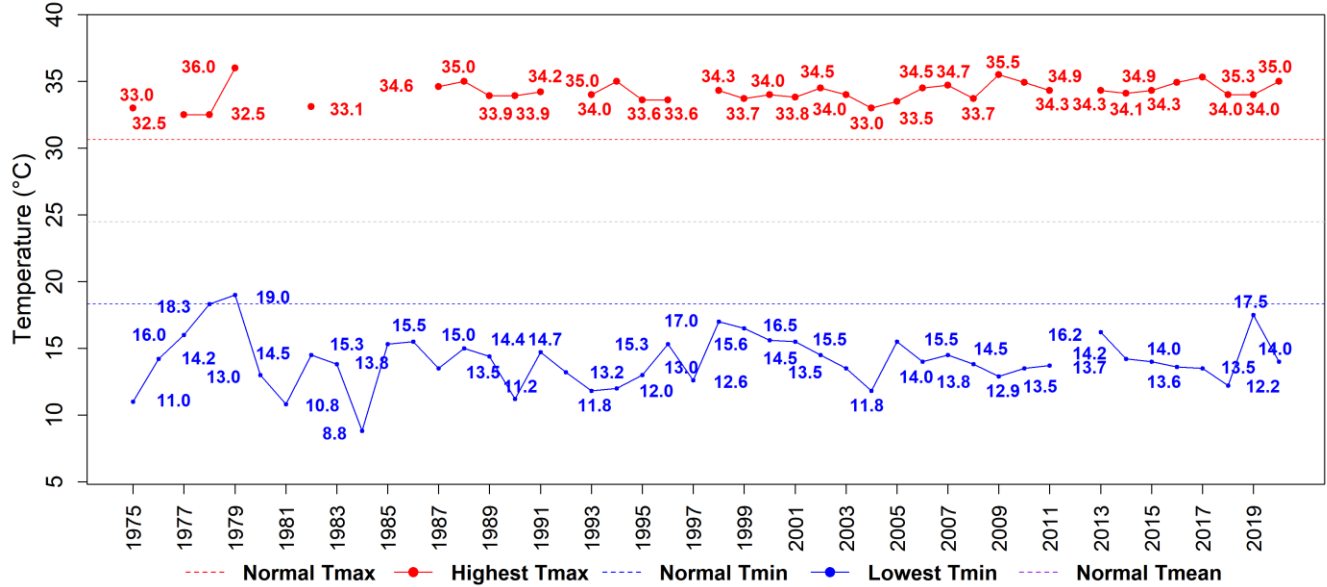


Government of Nepal
Ministry of Energy, Water Resource and Irrigation
Department of Hydrology and Meteorology
Climate Division
 Babarmahal, Kathmandu

Extreme Temperature at Dhangadhi(Attariya) in October

Ever recorded highest daily maximum temperature: 46.4°C on 16 June 1995

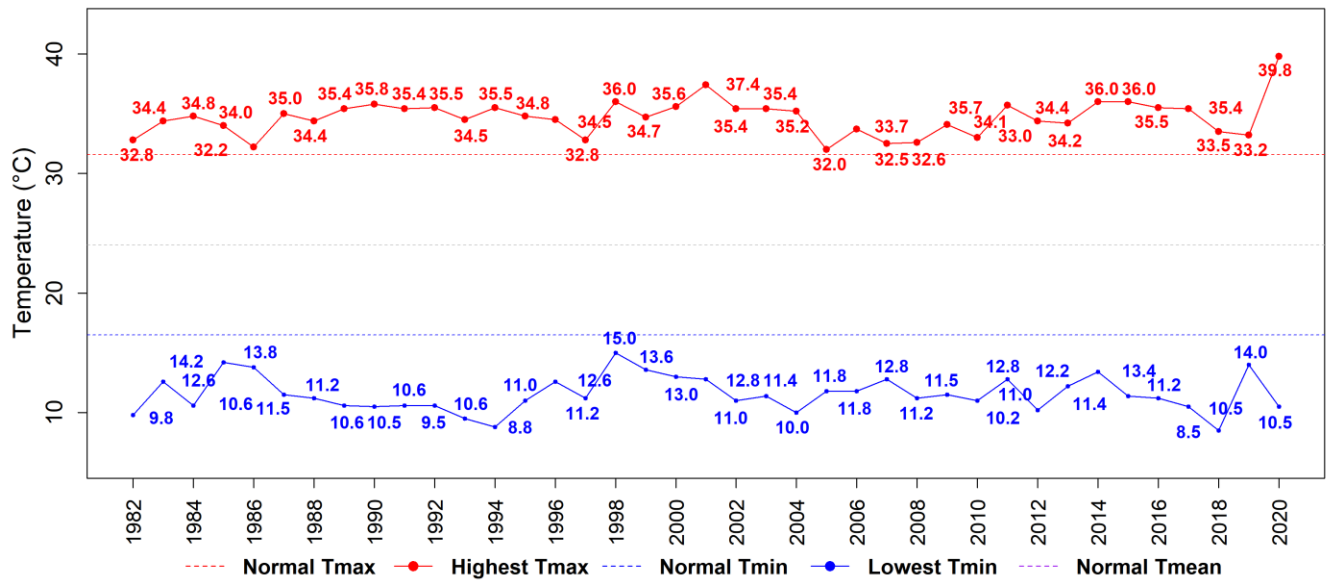
Ever recorded lowest daily minimum temperature: 0°C on 11 January 1985



Extreme Temperature at Dipayal (Doti) in October

Ever recorded highest daily maximum temperature: 45°C on 28 May 2012

Ever recorded lowest daily minimum temperature: -0.6°C on 13 January 1997

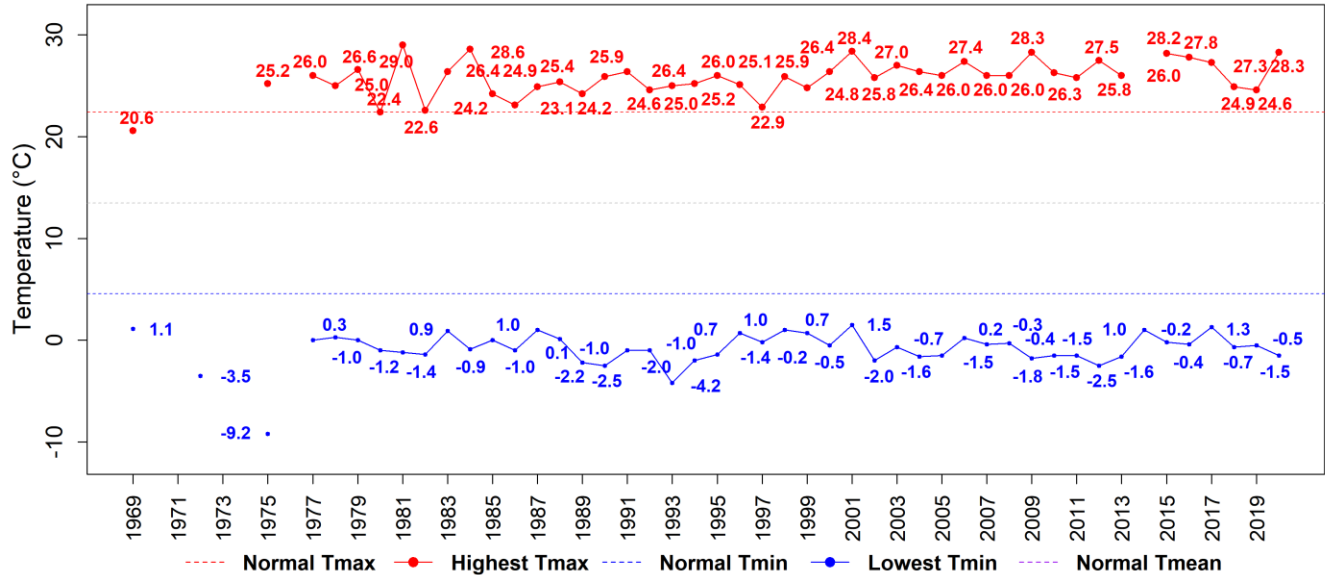




Government of Nepal
Ministry of Energy, Water Resource and Irrigation
Department of Hydrology and Meteorology
Climate Division
 Babarmahal, Kathmandu

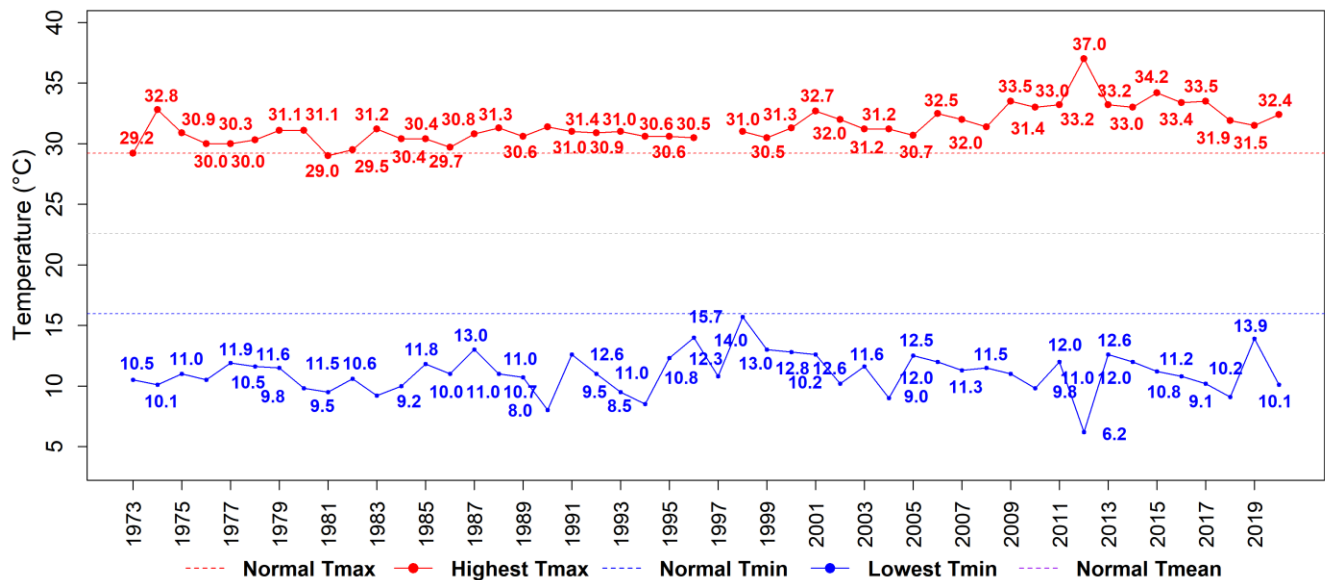
Extreme Temperature at Jumla in October

Ever recorded highest daily maximum temperature: 33.3°C on 24 May 1998
 Ever recorded lowest daily minimum temperature: -14°C on 4 February 2000



Extreme Temperature at Surkhet (Birendra Nagar) in October

Ever recorded highest daily maximum temperature: 43.8°C on 5 May 2012
 Ever recorded lowest daily minimum temperature: -0.7°C on 9 January 2013

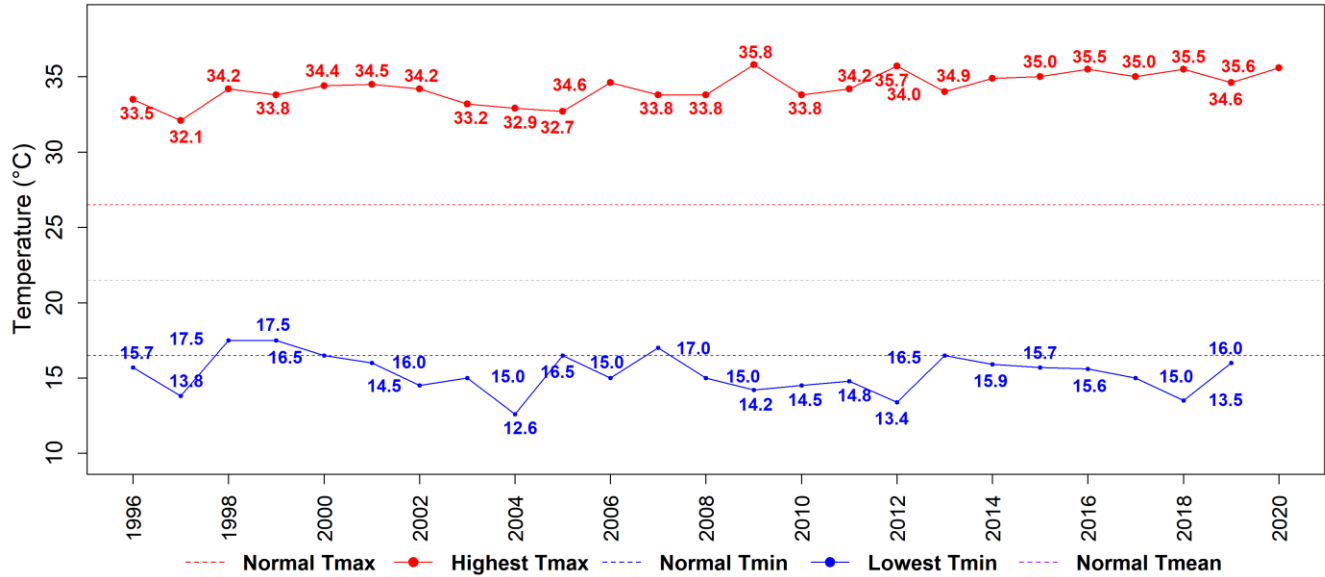




Government of Nepal
Ministry of Energy, Water Resource and Irrigation
Department of Hydrology and Meteorology
Climate Division
 Babarmahal, Kathmandu

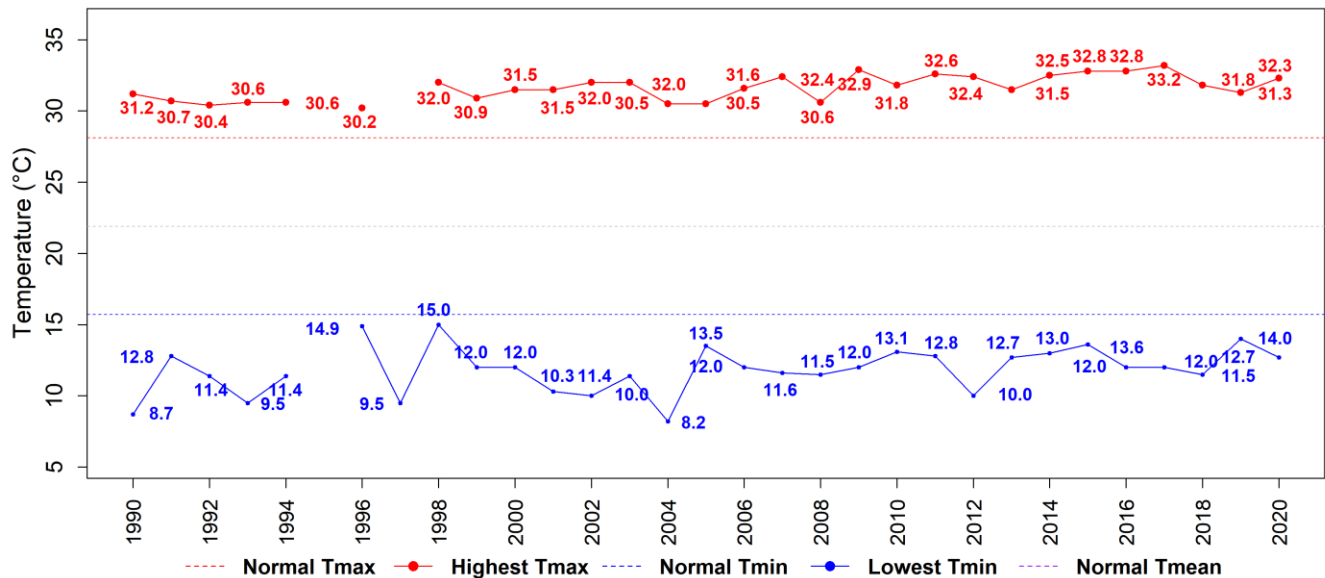
Extreme Temperature at Nepalgunj Airport in October

Ever recorded highest daily maximum temperature: 45°C on 14 June 2012
 Ever recorded lowest daily minimum temperature: 0.3°C on 9 January 2013



Extreme Temperature at Ghorahi (Dang) in October

Ever recorded highest daily maximum temperature: 41°C on 14 June 2012
 Ever recorded lowest daily minimum temperature: 0°C on 9 January 2001



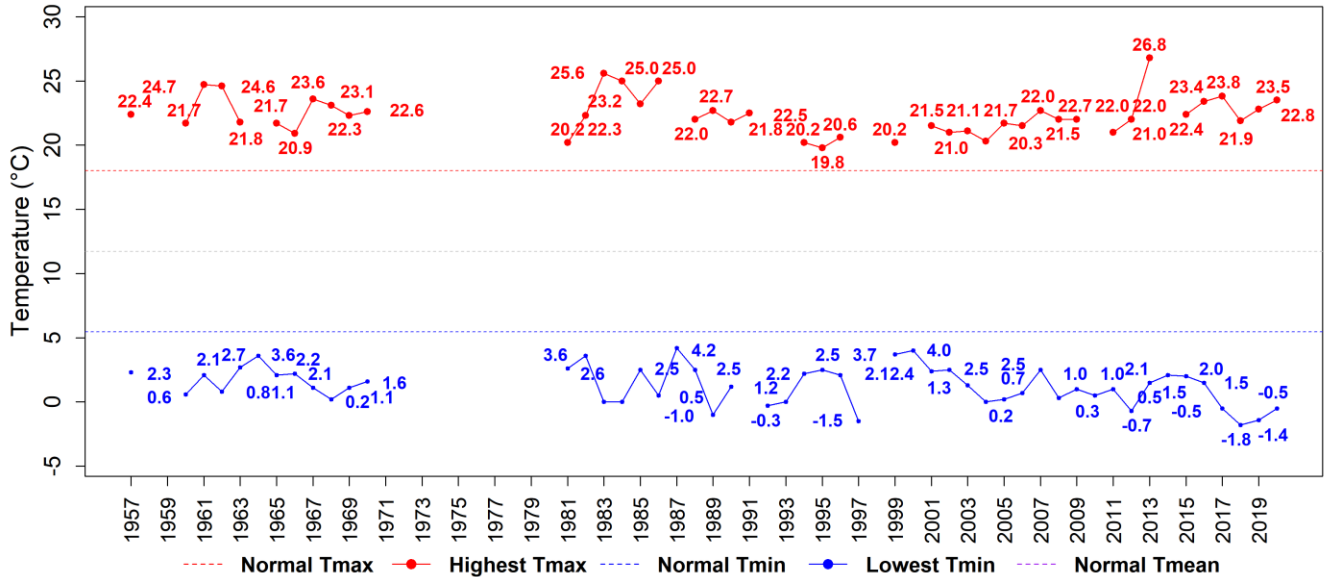


Government of Nepal
Ministry of Energy, Water Resource and Irrigation
Department of Hydrology and Meteorology
Climate Division
 Babarmahal, Kathmandu

Extreme Temperature at Jomsom in October

Ever recorded highest daily maximum temperature: 30.5°C on 1 August 1962

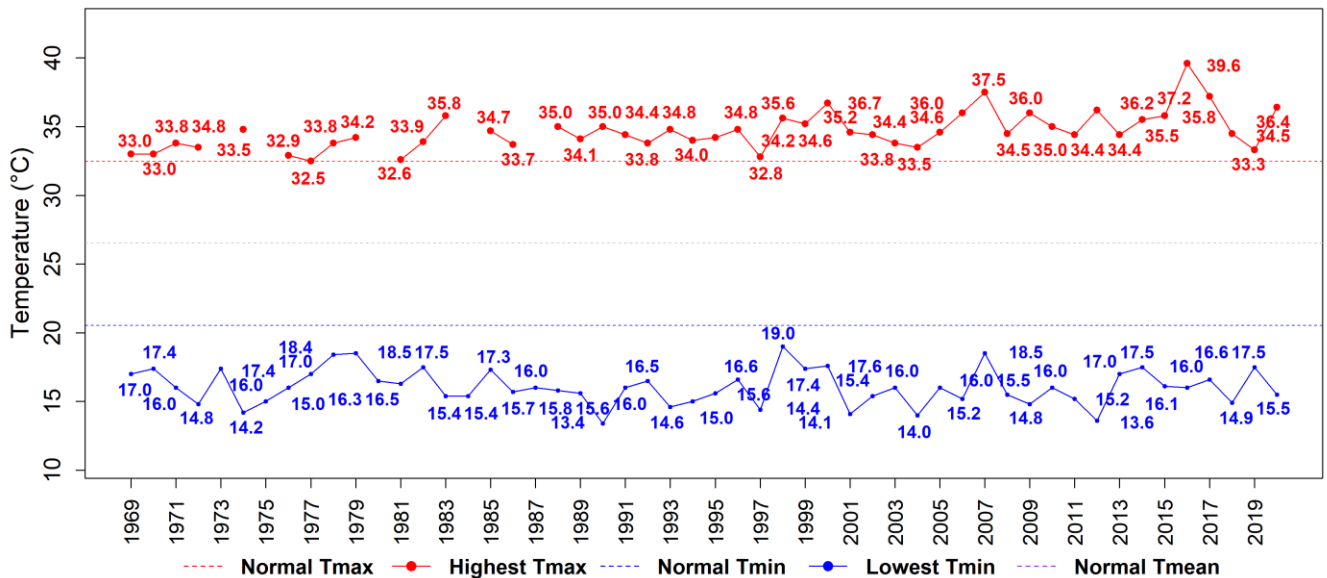
Ever recorded lowest daily minimum temperature: -11.6°C on 17 January 1994



Extreme Temperature at Bhairahawa Airport in October

Ever recorded highest daily maximum temperature: 45.2°C on 3 May 1995

Ever recorded lowest daily minimum temperature: 2°C on 30 January 1971

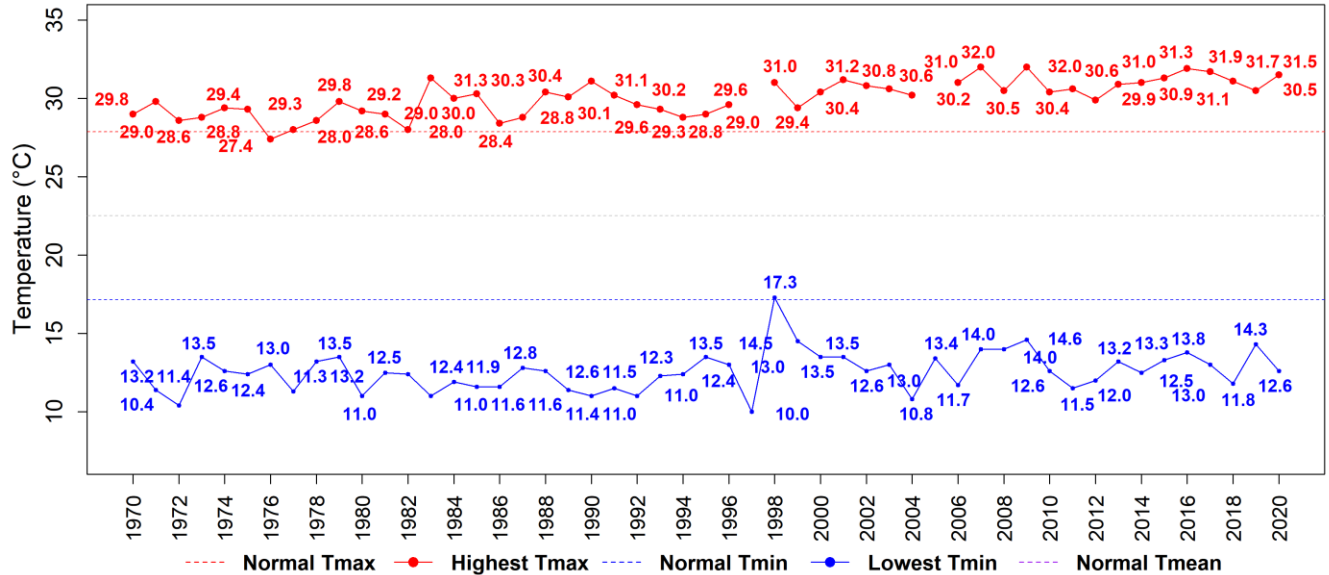




Government of Nepal
Ministry of Energy, Water Resource and Irrigation
Department of Hydrology and Meteorology
Climate Division
 Babarmahal, Kathmandu

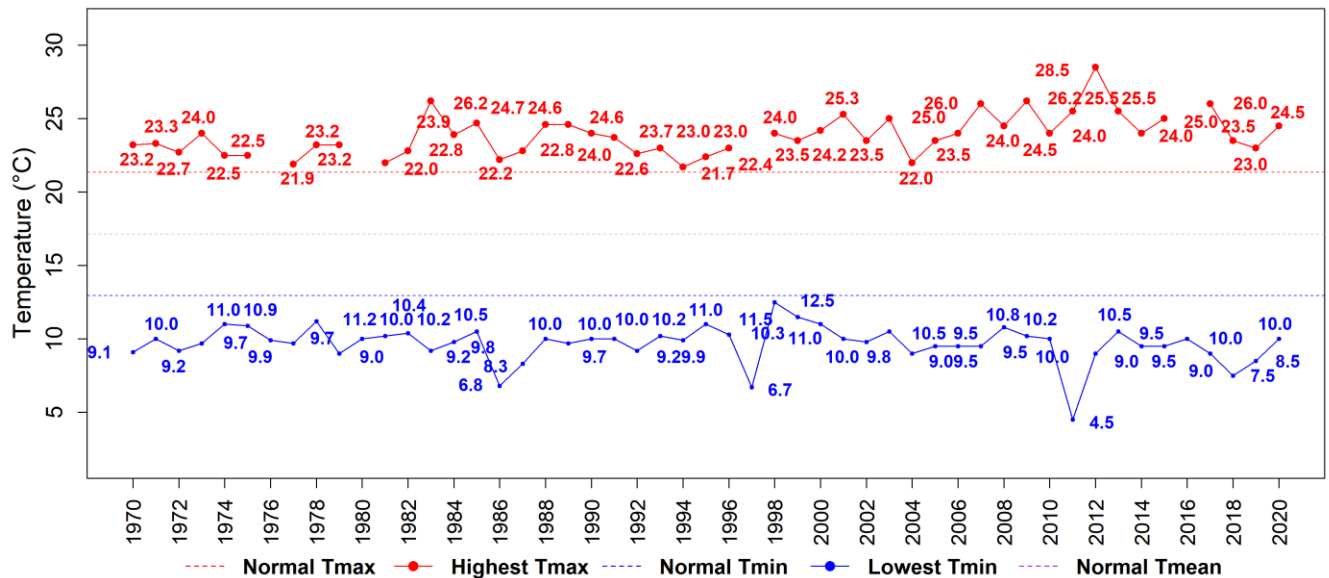
Extreme Temperature at Pokhara Airport in October

Ever recorded highest daily maximum temperature: 37.4°C on 8 April 1975
 Ever recorded lowest daily minimum temperature: 0.5°C on 13 January 2012



Extreme Temperature at Lumle in October

Ever recorded highest daily maximum temperature: 31°C on 4 May 2009
 Ever recorded lowest daily minimum temperature: -1.2°C on 15 January 2012



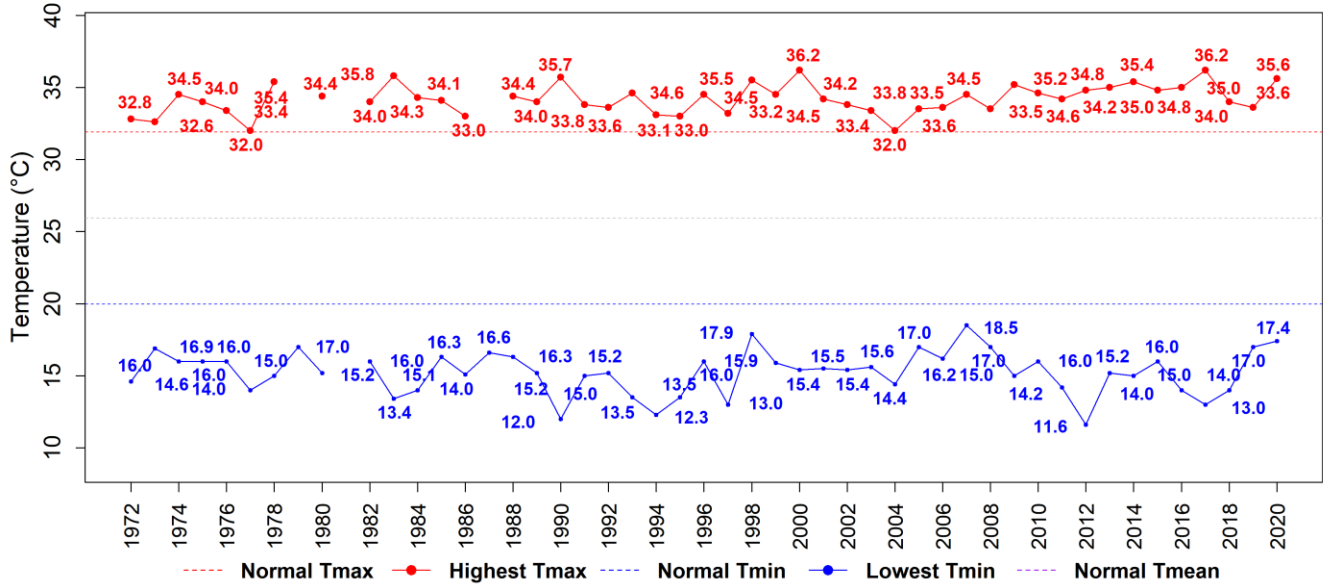


Government of Nepal
Ministry of Energy, Water Resource and Irrigation
Department of Hydrology and Meteorology
Climate Division
 Babarmahal, Kathmandu

Extreme Temperature at Simara Airport in October

Ever recorded highest daily maximum temperature: 42.8°C on 5 June 1979

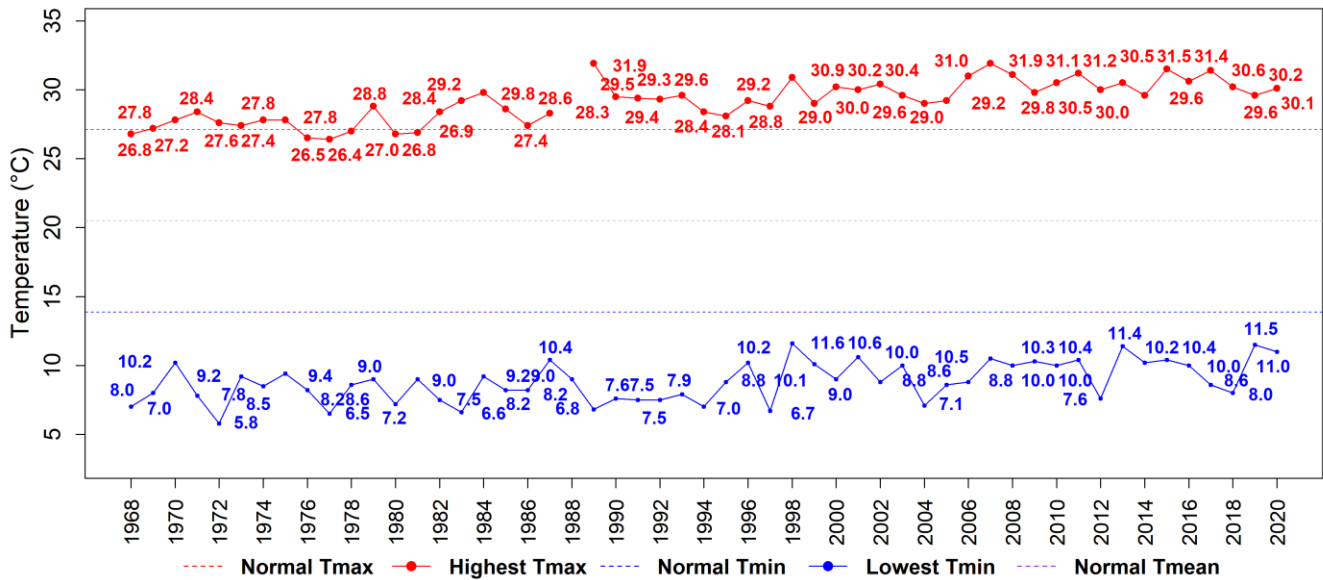
Ever recorded lowest daily minimum temperature: 0.4°C on 8 January 2020



Extreme Temperature at Kathmandu Airport in October

Ever recorded highest daily maximum temperature: 36.6°C on 7 May 1989

Ever recorded lowest daily minimum temperature: -3.5°C on 11 January 1978



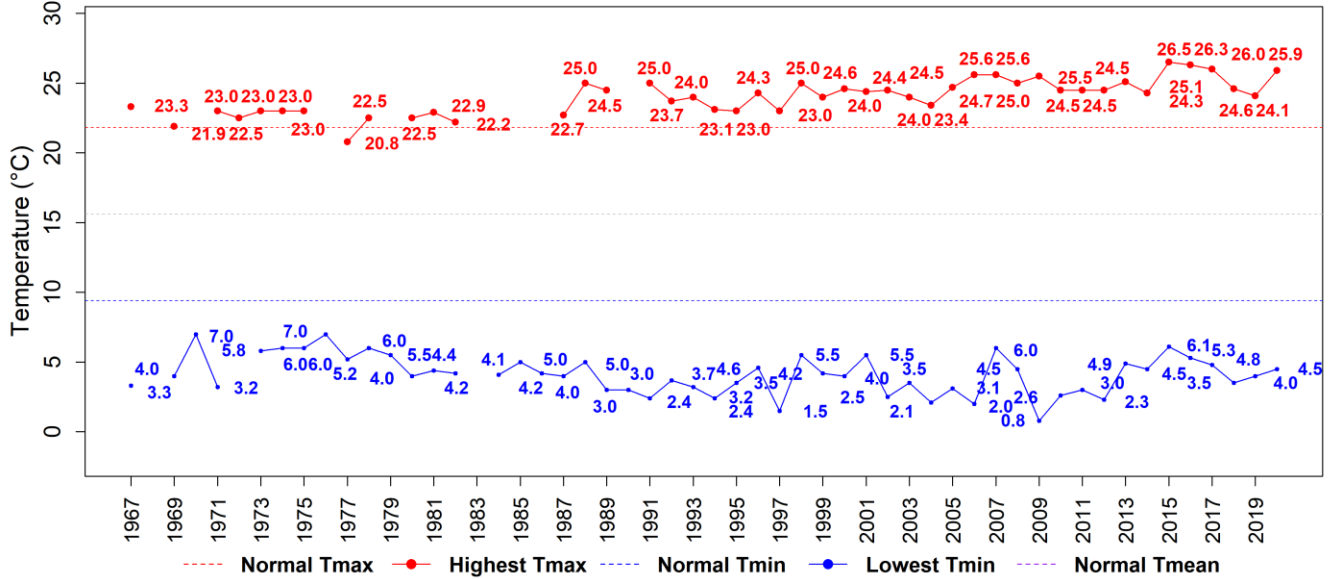


Government of Nepal
Ministry of Energy, Water Resource and Irrigation
Department of Hydrology and Meteorology
Climate Division
 Babarmahal, Kathmandu

Extreme Temperature at Jiri in October

Ever recorded highest daily maximum temperature: 29.2°C on 9 June 1966

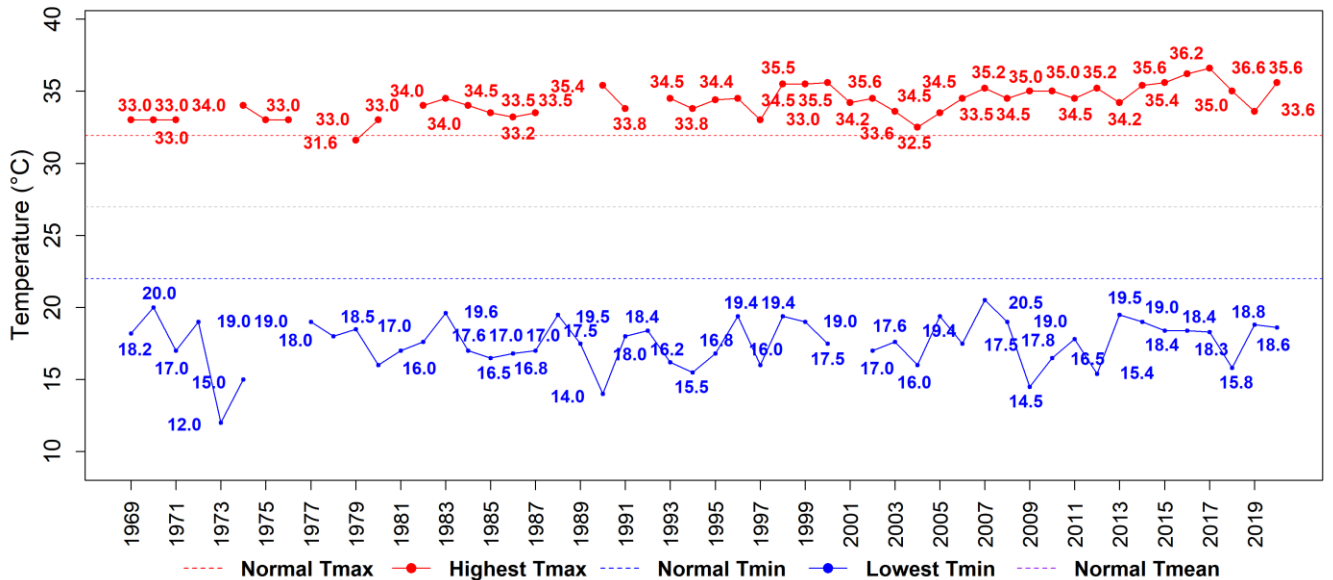
Ever recorded lowest daily minimum temperature: -9.6°C on 12 February 2011



Extreme Temperature at Janakpur Airport in October

Ever recorded highest daily maximum temperature: 42.4°C on 9 June 1998

Ever recorded lowest daily minimum temperature: 0°C on 20 January 2017

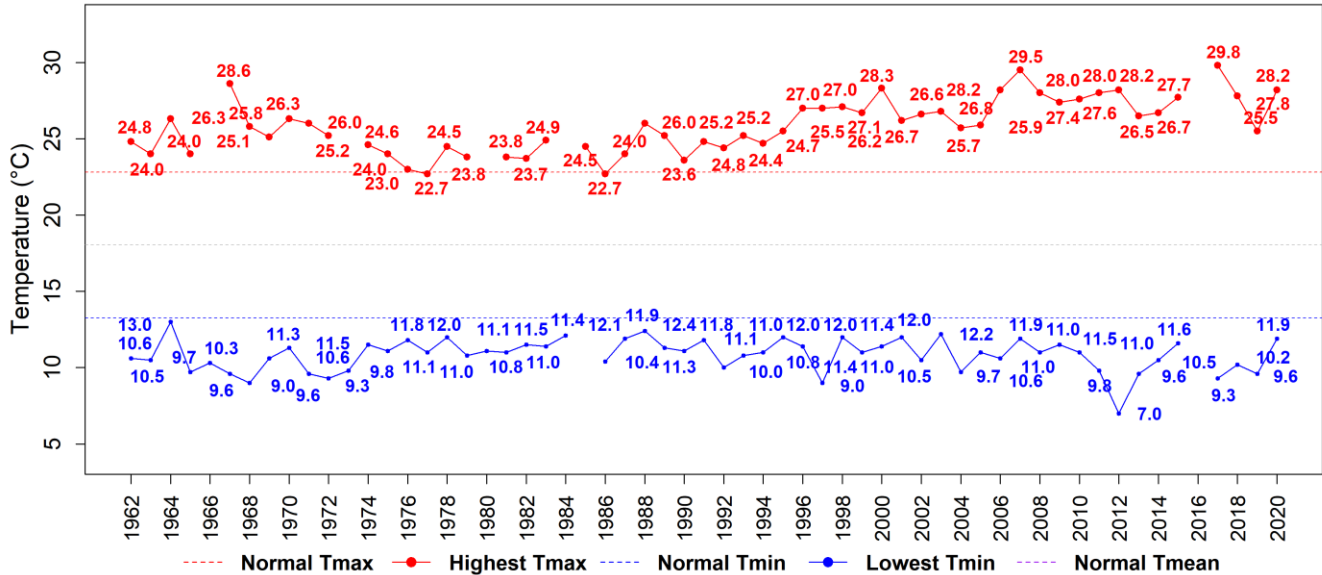




Government of Nepal
Ministry of Energy, Water Resource and Irrigation
Department of Hydrology and Meteorology
Climate Division
 Babarmahal, Kathmandu

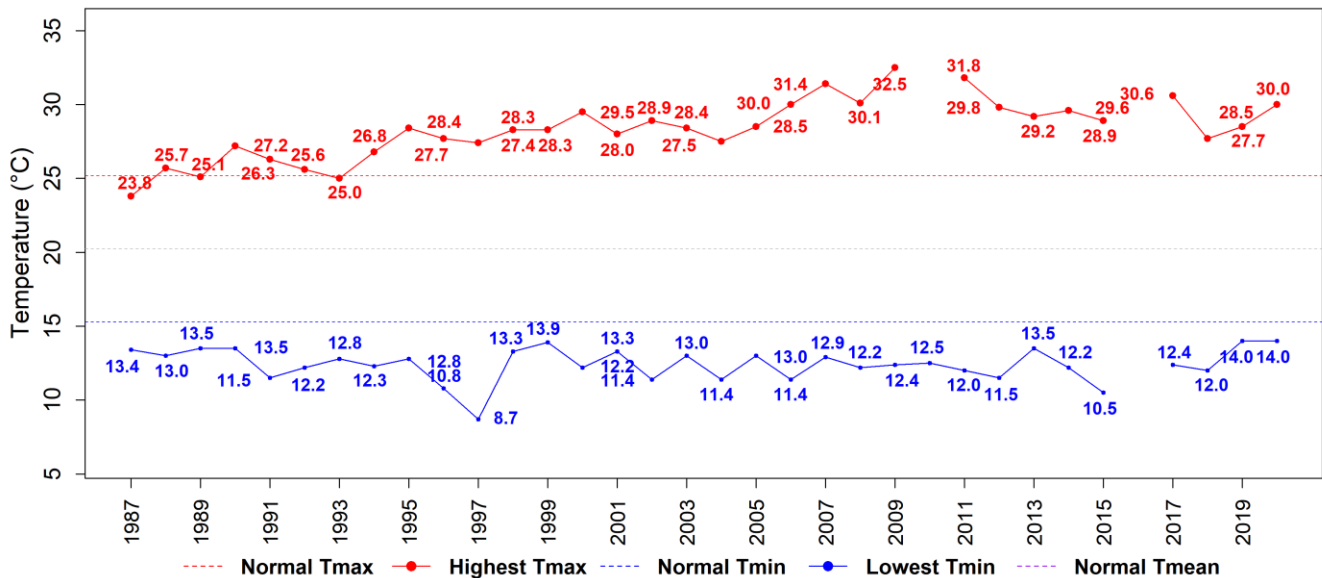
Extreme Temperature at Okhaldhunga in October

Ever recorded highest daily maximum temperature: 31.2°C on 7 June 2015
 Ever recorded lowest daily minimum temperature: -1.5°C on 8 January 2013



Extreme Temperature at Dhankuta in October

Ever recorded highest daily maximum temperature: 33.7°C on 21 June 2019
 Ever recorded lowest daily minimum temperature: 1.8°C on 27 December 2004



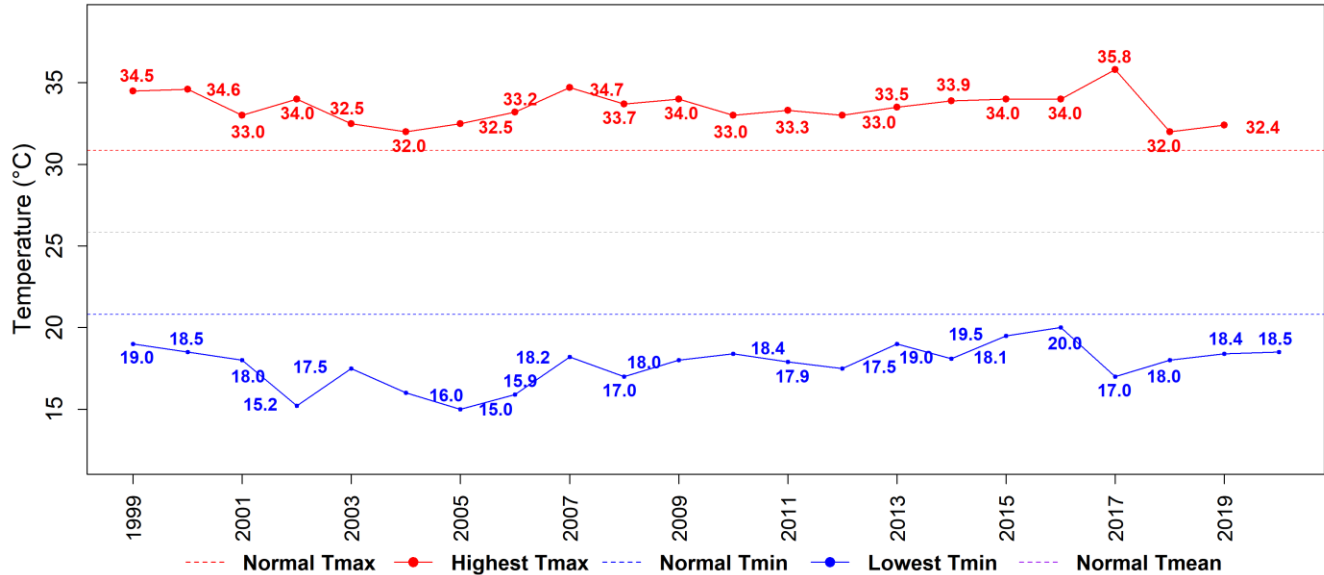


Government of Nepal
Ministry of Energy, Water Resource and Irrigation
Department of Hydrology and Meteorology
Climate Division
 Babarmahal, Kathmandu

Extreme Temperature at Dharan Bazar in October

Ever recorded highest daily maximum temperature: 38.8°C on 12 April 2013

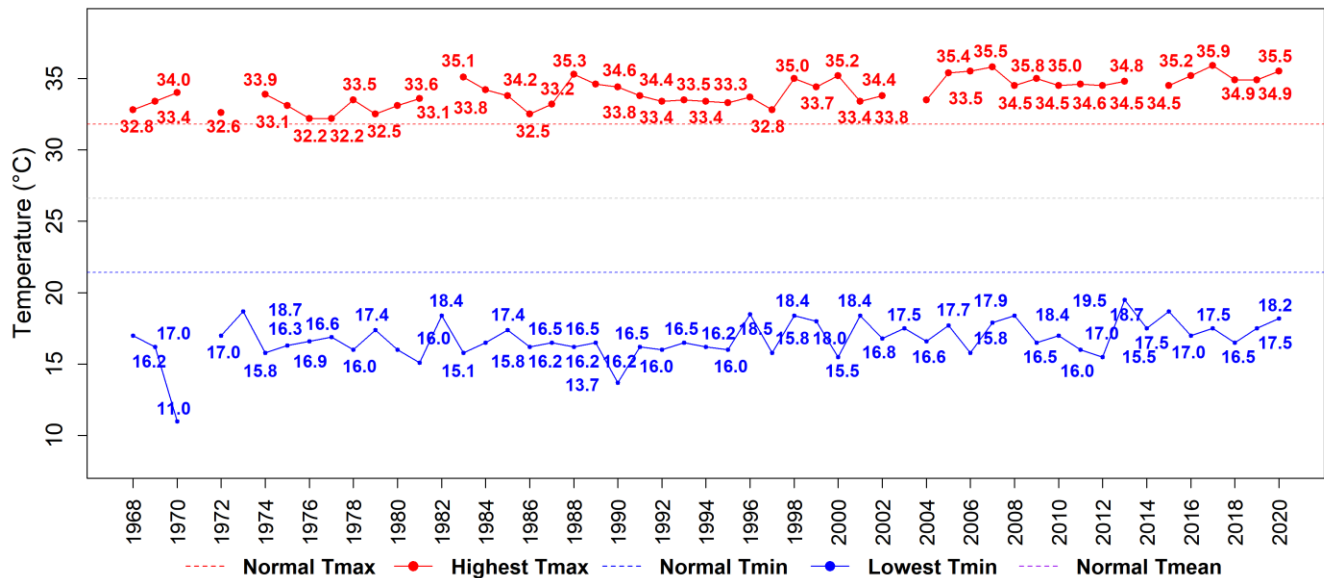
Ever recorded lowest daily minimum temperature: 3.5°C on 7 January 2006



Extreme Temperature at Biratnagar Airport in October

Ever recorded highest daily maximum temperature: 42°C on 14 April 1992

Ever recorded lowest daily minimum temperature: 0°C on 3 December 1970



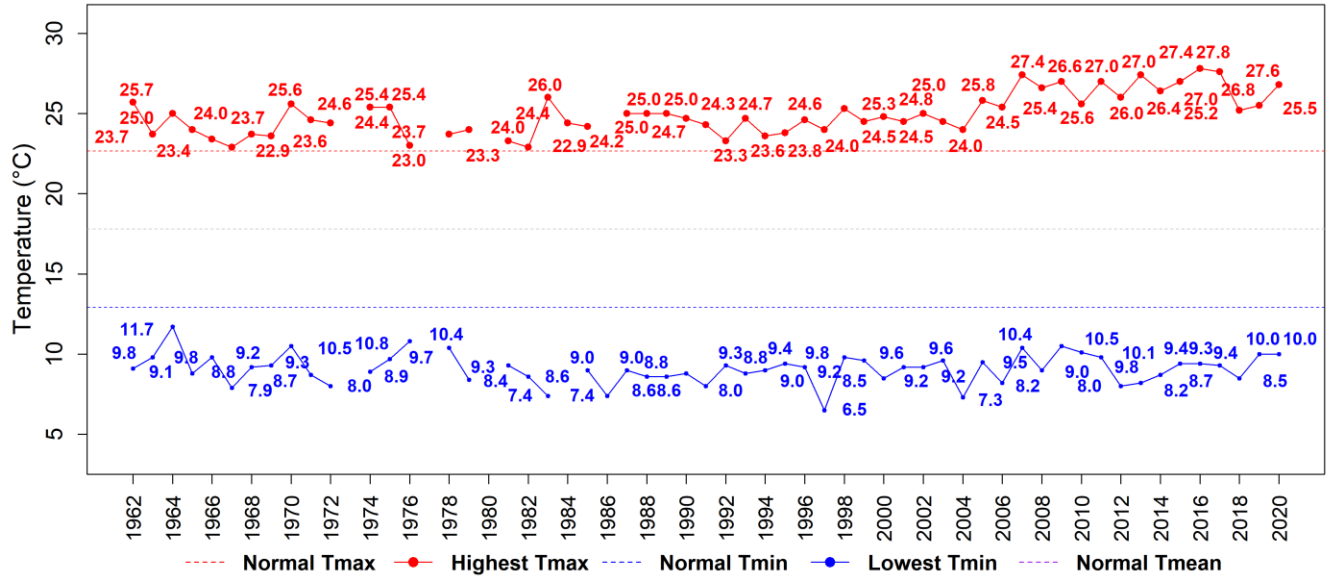


Government of Nepal
Ministry of Energy, Water Resource and Irrigation
Department of Hydrology and Meteorology
Climate Division
Babarmahal, Kathmandu

Extreme Temperature at Taplejung in October

Ever recorded highest daily maximum temperature: 29.7°C on 19 July 2018

Ever recorded lowest daily minimum temperature: -1°C on 17 January 1992





Government of Nepal
Ministry of Energy, Water Resource and Irrigation
Department of Hydrology and Meteorology
Climate Division
Babarmahal, Kathmandu

Table 1: Trend and Significance of extreme daily Temperature in October

Stations	Longitude (Deg)	Latitude (Deg)	Trend of extreme maximum temperature in October		Trend of extreme minimum temperature in October	
			Trend (Deg Celsius/year)	Significance at 95 % confidence level (p-value)	Trend (Deg Celsius/year))	Significance at 95 % confidence level (p-value)
Dadeldhura	80.588	29.301	0.07 / increasing	0 / Significant	0.01 / increasing	0.24 / Insignificant
Dhangadhi	80.560	28.813	0.03 / increasing	0.05 / Insignificant	0.02 / increasing	0.19 / Insignificant
Dipayal	80.937	29.262	0.02 / increasing	0.14 / Insignificant	0.08 / increasing	0 / Significant
Jumla	82.180	29.275	0.07 / increasing	0 / Significant	0.06 / increasing	0.01 / Significant
Surkhet	81.635	28.588	0.06 / increasing	0 / Significant	0.03 / increasing	0.01 / Significant
Nepalgunj Airport	81.668	28.101	0.09 / increasing	0 / Significant	0.04 / increasing	0.26 / Insignificant
Ghorahi (Dang)	82.484	28.037	0.1 / increasing	0 / Significant	0.04 / increasing	0.18 / Insignificant
Jomsom	83.730	28.784	-0.02 / decreasing	0.05 / Significant	0.01 / increasing	0.39 / Insignificant
Bhairahawa Airport	83.420	27.507	0.04 / increasing	0 / Significant	0.03 / increasing	0 / Significant
Pokhara Airport	83.980	28.200	0.06 / increasing	0 / Significant	0.03 / increasing	0 / Significant
Lumle	83.818	28.297	0.03 / increasing	0 / Significant	0.03 / increasing	0 / Significant
Simara Airport	84.980	27.164	0.03 / increasing	0 / Significant	0.04 / increasing	0 / Significant
Kathmandu Airport	85.356	27.704	0.07 / increasing	0 / Significant	0.04 / increasing	0 / Significant
Jiri	86.232	27.630	0.06 / increasing	0 / Significant	0.01 / increasing	0.32 / Insignificant
Janakpur Airport	85.924	26.711	0.05 / increasing	0 / Significant	0.03 / increasing	0.01 / Significant
Okhaldhunga	86.504	27.308	0.04 / increasing	0 / Significant	0.02 / increasing	0.07 / Insignificant
Dhankuta	87.346	26.983	0.17 / increasing	0 / Significant	0.06 / increasing	0 / Significant
Dharan Bazaar	87.298	26.792	0.05 / increasing	0.05 / Insignificant	0.14 / increasing	0 / Significant



Government of Nepal
Ministry of Energy, Water Resource and Irrigation
Department of Hydrology and Meteorology
Climate Division
Babarmahal, Kathmandu

Biratnagar Airport	87.267	26.484	0.04 / increasing	0 / Significant	0.03 / increasing	0.01 / Significant
Taplejung	87.670	27.359	0.04 / increasing	0 / Significant	0.02 / increasing	0.01 / Significant

Table 2: Ever recorded annual and monthly highest daily temperature information

Stations	Longitude (Deg)	Latitude (Deg)	Ever recorded highest daily maximum temperature information		Ever recorded highest daily minimum temperature information	
			Annual [value (Deg Celsius/date)]	October [value (Deg Celsius/date)]	Annual [value (Deg Celsius/date)]	October [value (Deg Celsius/date)]
Dadeldhura	80.588	29.301	37 / 17 May 2010	27.4 / 2 October 2009	-5 / 25 January 2008	5.4 / 15 October 2004
Dhangadhi	80.560	28.813	46.4 / 16 June 1995	36 / 9 October 1979	0 / 11 January 1985	8.8 / 30 October 1984
Dipayal	80.937	29.262	44.4 / 25 May 2015	39.8 / 17 October 2020	-0.6 / 13 January 1997	8.5 / 28 October 2018
Jumla	82.180	29.275	33.3 / 24 May 1998	29 / 14 October 1981	-14 / 4 February 2000	-9.2 / 29 October 1975
Surkhet	81.635	28.588	43.8 / 5 May 2012	37 / 27 October 2012	-0.7 / 9 January 2013	6.2 / 26 October 2012
Nepalgunj Airport	81.668	28.101	45 / 14 June 2012	35.8 / 1 October 2009	0.3 / 9 January 2013	12.6 / 31 October 2004
Ghorahi (Dang)	82.484	28.037	41 / 14 June 2012	33.2 / 6 October 2017	0 / 9 January 2001	8.2 / 31 October 2004
Jomsom	83.730	28.784	30.5 / 1 August 1962	26.8 / 8 October 2013	-11.6 / 6 February 1983, 17 January 1994	-1.8 / 27 October 2018
Bhairahawa Airport	83.420	27.507	45.2 / 3 May 1995	39.6 / 19 October 2016	2 / 30 January 1971	13.4 / 28 October 1990
Pokhara Airport	83.980	28.200	37.4 / 8 April 1975, 28 April 1999	32 / 8 October 2007, 2 October 2009	0.5 / 13 January 2012	10 / 25 October 1997

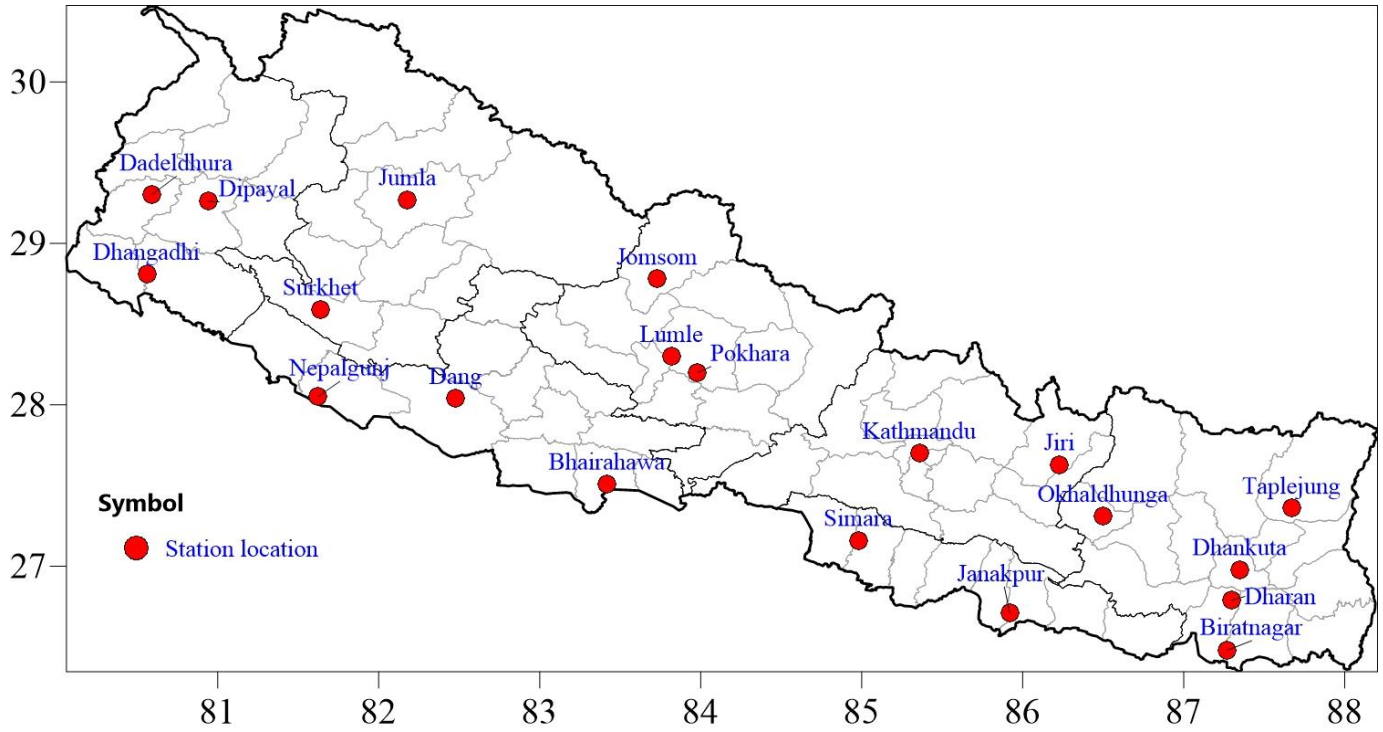


Government of Nepal
Ministry of Energy, Water Resource and Irrigation
Department of Hydrology and Meteorology
Climate Division
Babarmahal, Kathmandu

Lumle	83.818	28.297	31 / 4 May 2009, 2 July 2009	28.5 / 1 October 2012	-1.2 / 15 January 2012	4.5 / 25 October 2011
Simara Airport	84.980	27.164	42.2 / 2 May 1995	36.2 / 17 October 2000, 7 October 2017	0.4 / 8 January 2020	11.6 / 27 October 2012
Kathmandu Airport	85.356	27.704	35.6 / 26 April 1999	31.9 / 15 October 1989, 7 October 2007	-3.5 / 11 January 1978	5.8 / 25 October 1972
Jiri	86.232	27.630	29 / 13 September 2012	26.5 / 7 October 2015	-9.6 / 12 February 2011	0.8 / 30 October 2009
Janakpur Airport	85.924	26.711	42.2 / 25 May 1995	36.6 / 6 October 2017	0 / 20 January 2017	12 / 22 October 1973
Okhaldhun ga	86.504	27.308	31.2 / 7 June 2015	29.8 / 15 October 2017	-1.5 / 8 January 2013	7 / 26 October 2012
Dhankuta	87.346	26.983	33.7 / 21 June 2019	32.5 / 1 October 2009	1.8 / 27 December 2004	8.7 / 28 October 1997
Dharan Bazzar	87.298	26.792	38.8 / 12 April 2013	35.8 / 5 October 2017	3.5 / 7 January 2006	15 / 30 October 2005
Biratnagar Airport	87.267	26.484	41.5 / 15 May 2012	35.9 / 6 October 2017	0 / 3 December 1970	11 / 21 October 1970
Taplejung	87.670	27.359	29.7 / 19 July 2018	27.8 / 3 October 2016	-1 / 17 January 1992	6.5 / 26 October 1997



Government of Nepal
Ministry of Energy, Water Resource and Irrigation
Department of Hydrology and Meteorology
Climate Division
Babarmahal, Kathmandu



Map 1: Distribution of 20 stations used in this report.